



# 904L STAINLESS STEEL WOVEN WIRE MESH

---



**TENDER WIRE MESH**

[www.woven-filtermesh.com](http://www.woven-filtermesh.com) | [Darth@tender-wriemesh.com](mailto:Darth@tender-wriemesh.com)

# Specifications

904L stainless steel is a high alloy austenitic stainless steel with the standard number UNS N08904, mainly used in environments with strong corrosion resistance. It has excellent acid and corrosion resistance, especially in environments with sulfuric acid, phosphoric acid, acetic acid, and chloride, which is much better than conventional austenitic stainless steels such as 304 and 316. absorption..

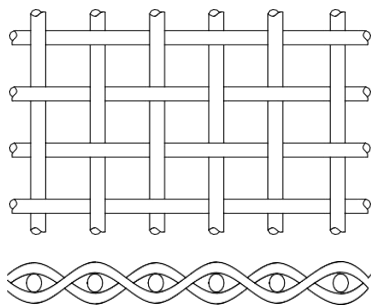
**Wire diameter:** 0.02–3.5 mm.

**Mesh:** 2–500 mesh.

**Width:** standard less than 2000 mm.

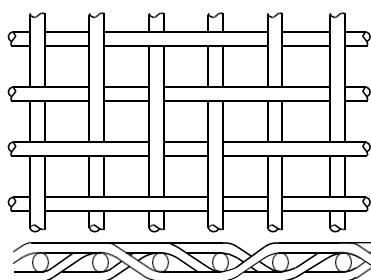
**Length:** 30 m rolls or cut to length, minimum 2 m.

## Weave Type



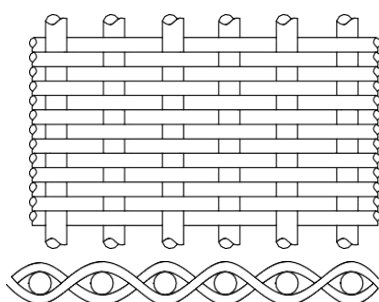
**Plain weave**

The simplest used type with square openings. It is woven by alternating the weft wire over and under the warp wire. It is often used for weaving coarse mesh and typically serves as the protection layer of coarse filtration and filter media.



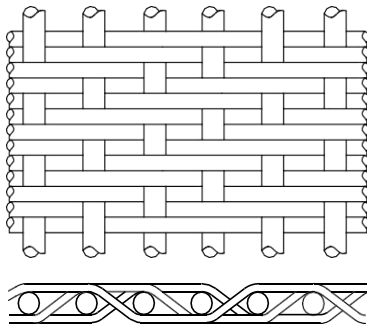
**Twill weave**

Each weft wire passes alternately over and under 2 warp wires, staggered on successive warps. It is generally used for weaving fine mesh and is suitable for fine filtration than plain weave.



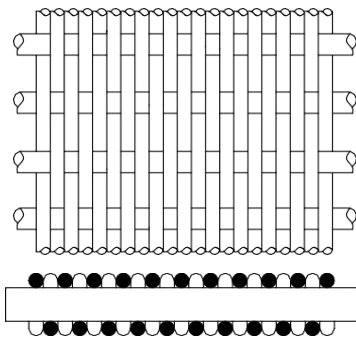
**Plain Dutch weave**

The diameter of the warp wire is bigger than the weft wire. During the weaving process, the finer weft wires are driven closer to form a tight filter medium. Typically, coarse mesh works as a reinforcing layer of the metal sintered mesh and the fine mesh as the filtration layer of the metal sintered mesh.



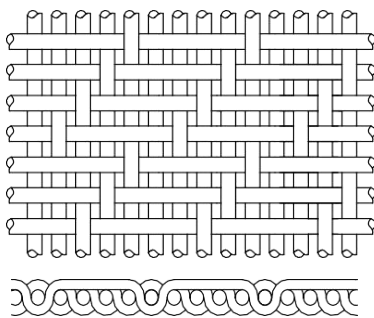
**Twill dutch weave**

It combines the Dutch and twill weaving process. Each warp wire passes over and under two fine weft wires. Weft wires are driven closer to each other, forming a tight woven mesh with tapered or wedge-shaped openings. In addition, it also forms smaller opening sizes. Typically, coarse mesh works as a reinforcing layer of the metal sintered mesh and the fine



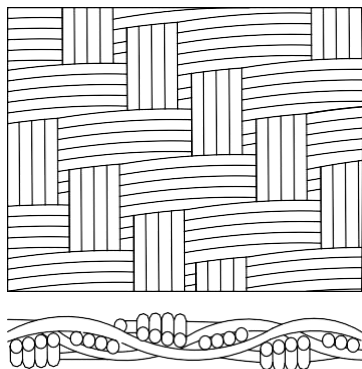
**Reverse dutch weave**

It is in a reverse of the plain Dutch weave wire arrangement using larger warp wires and smaller weft wires. It adopts smaller warp wires to offer a tight mesh structure for filtration and larger weft wires deliver higher strength for the woven mesh to extend its service life. Polymer continuous filter belts are generally produced with reverse Dutch weave.



**Five-heddle weave**

Every warp wire alternately up and down each single and four weft wires and vice versa. It provides a rectangular opening and offers high flow rates and good mechanical stability. It is widely used in drainage filtration, undercurrent filtration, and paper-making and chemical packing dehydration.



**Multiplex weave**

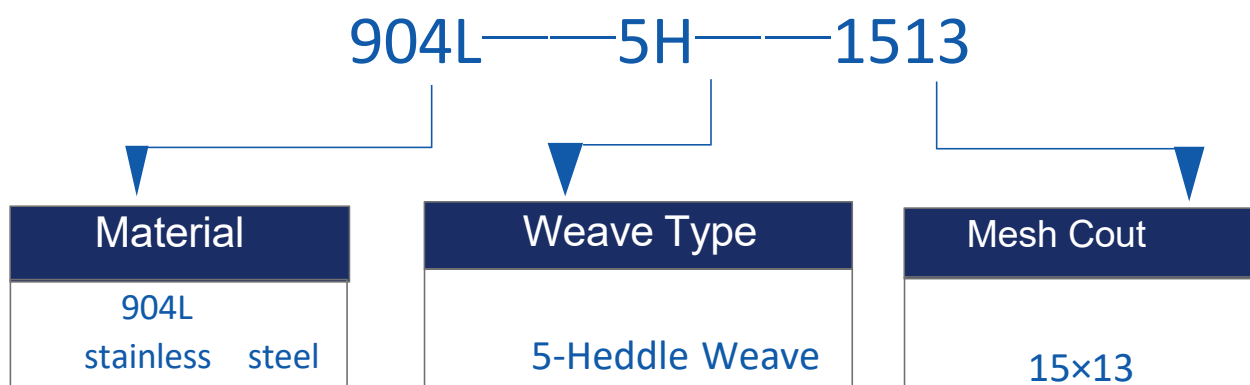
It is a relatively complex metal wire mesh or textile structure, characterized by the interweaving of multiple layers or strands of silk threads to form a more stable, durable, or functionally specific structure. Commonly used for high demand applications such as filtration, reinforcement, decoration, etc

# Customized Design and Production Planning

TENDER WIRE MESH is the largest manufacturer of metal braided wire mesh in China.

We Having over 20 professional PhDs in metal materials, responsible for the design department, possessing significant design and production capabilities provide customized production for all customers

Just tell us the material, weaving method, and mesh you want, and we will provide you with a quotation, such as the following **a simple code like this can be used**



Besides, if you already have relevant product designs, you can tell us directly. We can directly produce for you

Or, tell me your purpose, filter media, and other information so that we can design and produce for you

Of course, as an excellent manufacturer, it is necessary to have sufficient spot inventory to meet the timely needs of customers.

We can achieve fast delivery for the goods listed in the commonly used specifications table below.



### Standard specification table

Material	Mesh Size Opening	Wire Diameter		Width of		
		Open Area %	wire/inch	inch	mm	inch
904L STAINLESS STEEL	12 × 12	0.0110	0.2794	0.0723	1.8364	75.3
	18 × 18	0.0170	0.4318	0.0390	0.9906	48.3
	20 × 20	0.0050	0.1270	0.0450	1.1430	81.0
	20 × 20	0.0130	0.3302	0.0370	0.9398	54.8
	20 × 20	0.0160	0.4064	0.0340	0.8636	46.2
	26 × 26	0.0130	0.3302	0.0260	0.6604	44.0
	30 × 30	0.0100	0.2540	0.0230	0.5842	48.9
	30 × 30	0.0110	0.2794	0.0220	0.5588	44.8
	30 × 30	0.0125	0.3175	0.0208	0.5283	39.1
	30 × 30	0.0130	0.3302	0.0200	0.5080	37.1
	35 × 35	0.0130	0.3302	0.0160	0.4064	29.8
	40 × 40	0.0070	0.1778	0.0180	0.4572	51.8
	40 × 40	0.0090	0.2286	0.0160	0.4064	41.0
	40 × 40	0.0100	0.2540	0.0150	0.3810	36.0
	46 × 46	0.0035	0.0889	0.0182	0.4623	70.4
	50 × 50	0.0030	0.0762	0.0170	0.4318	72.3
	50 × 50	0.0090	0.2286	0.1100	2.7940	30.3
	60 × 60	0.0055	0.1397	0.0112	0.2845	44.9
	60 × 60	0.0070	0.1778	0.0100	0.2540	33.9
	80 × 70	0.0050	0.1270	0.0000	0.0000	39.0
80 × 80	0.0055	0.1397	0.0070	0.1778	31.4	
100 × 100	0.0025	0.0635	N/A	N/A	N/A	
200 × 200	0.0020	0.0508	0.0030	0.0762	36.0	

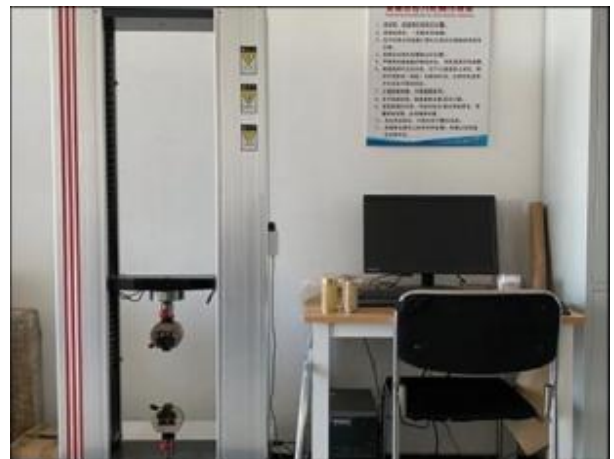
# Quality Inspection

Product quality ownership is the most important concern for buyers.

TENDER WIRE MESH, We have strict quality testing for all products produced



**2D Plane Imager**



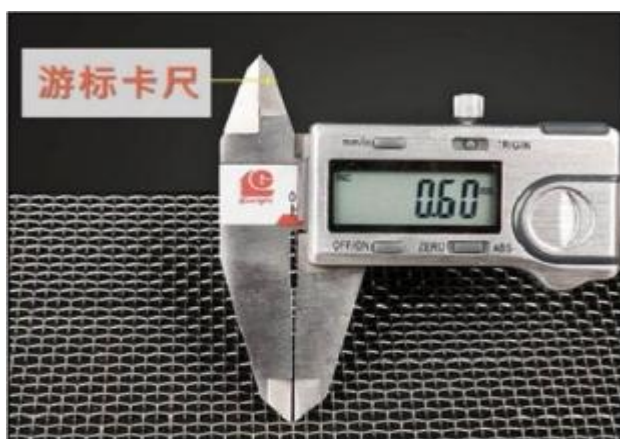
**Tensile Testing Machine**



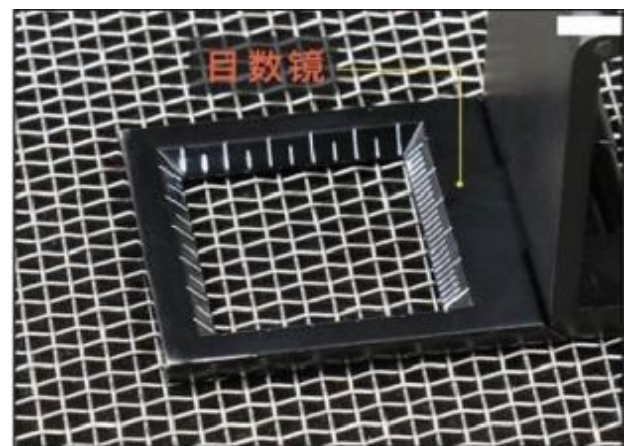
**Hydrochloric Acid Corrosion Test**



**Spectral Analyzer**

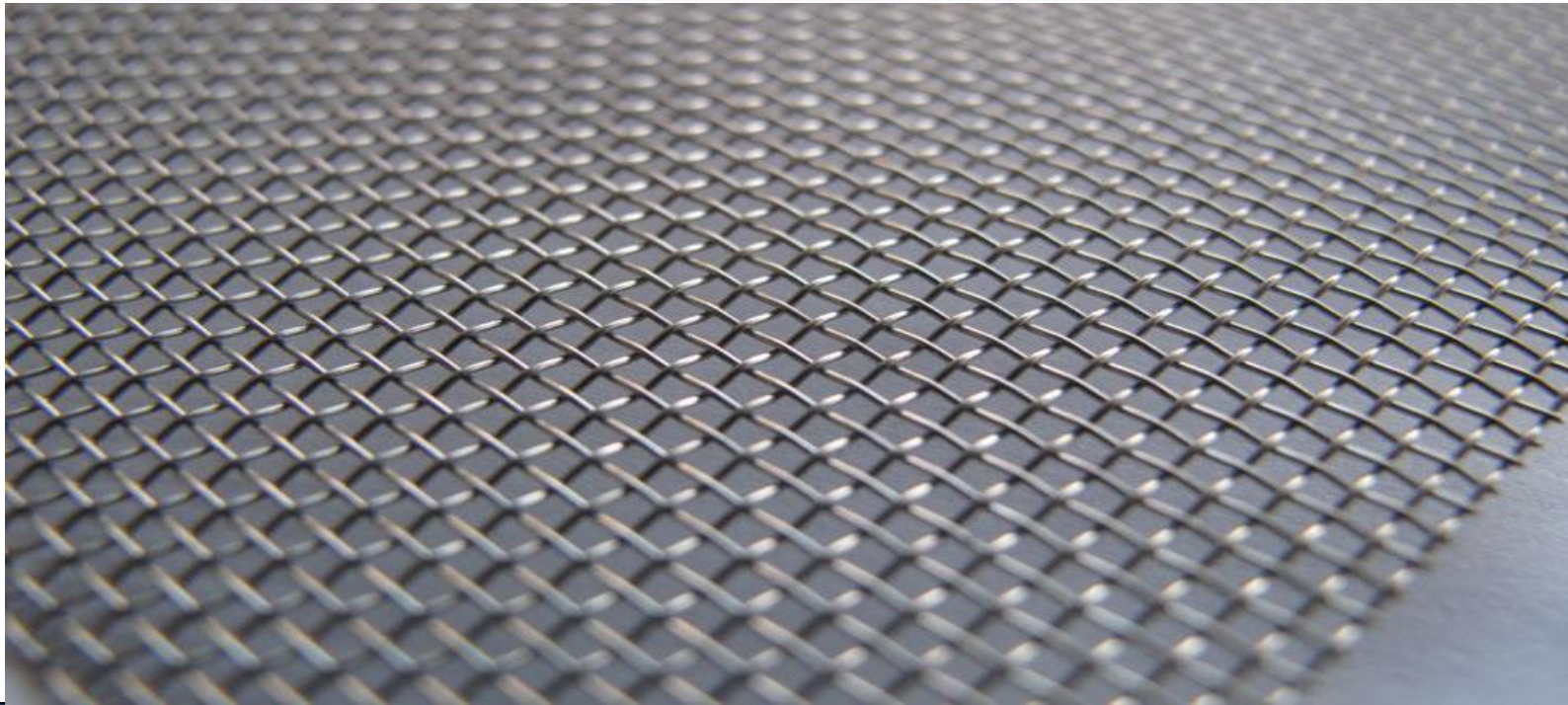


**Vernier caliper**



**Inch mesh mirror**

## Contact Us



TENDER WIRE MESH, It is the largest manufacturer of metal woven wire mesh in China.

The factory covers an area of 58000 square meters, with 600 sets of various automated machines, over 200 workers, and 20 professional doctoral engineers. We serve over 3000 customers annually and generate sales of 40 million US dollars.

Search for information on other wire mesh products

[www.tender-wiremesh.com](http://www.tender-wiremesh.com)

Please contact for quotation

E-mail: [Darth@tender-wiremesh.com](mailto:Darth@tender-wiremesh.com)

Whatsapp: +86 15588645515

Wechat: +86 15588645515